



CONTINUOUS INKJET PRINTING NEEDS WEKO-WEBCON

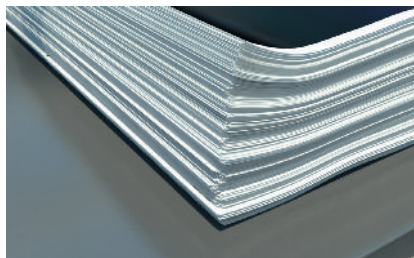
WEKO



PAPER CONDITIONING BY REMOISTENING IN CONTINUOUS INKJET PRINTING

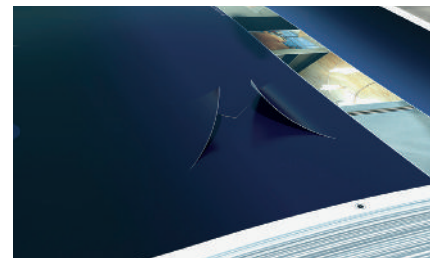
IN HIGH-CAPACITY INKJET
PRINTING PAPER LOSES ITS
ORIGINAL PROPERTIES WHEN THE
INK DRIES AND RESPONDS BY:

- Electrostatic charging
- Paper Curl
- Waviness
- Paper break during folding



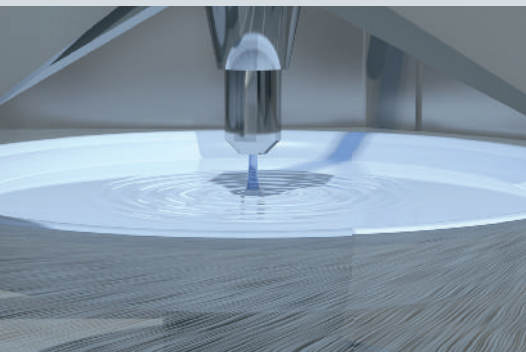
Electrostatic charging

Poor stacking and running characteristics causing trouble in post-processing and more waste.



Paper Curl

Paper becomes prone to curling and has poorer running characteristics in turn hampering its further processing and handling.

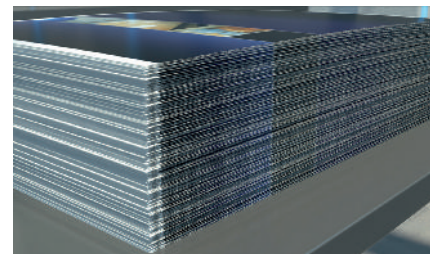


THE SOLUTION: ULTRA-FINE
METERING APPLICATION SYSTEMS
FROM WEKO



Waviness

Paper waviness impairs the quality of the final product, which must be avoided particularly in book production.



Paper break during folding

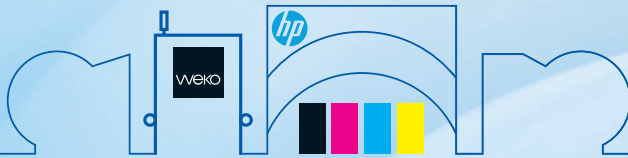
Breaking of the brochure spine after folding is very annoying, in particular on paper which is printed all over.



FOR MAXIMUM DEMANDS IN CONTINUOUS INKJET PRINTING



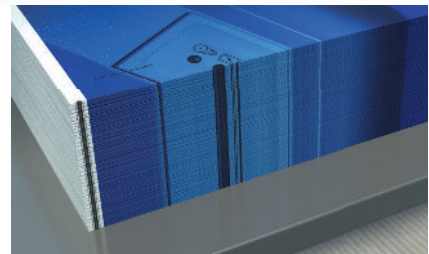
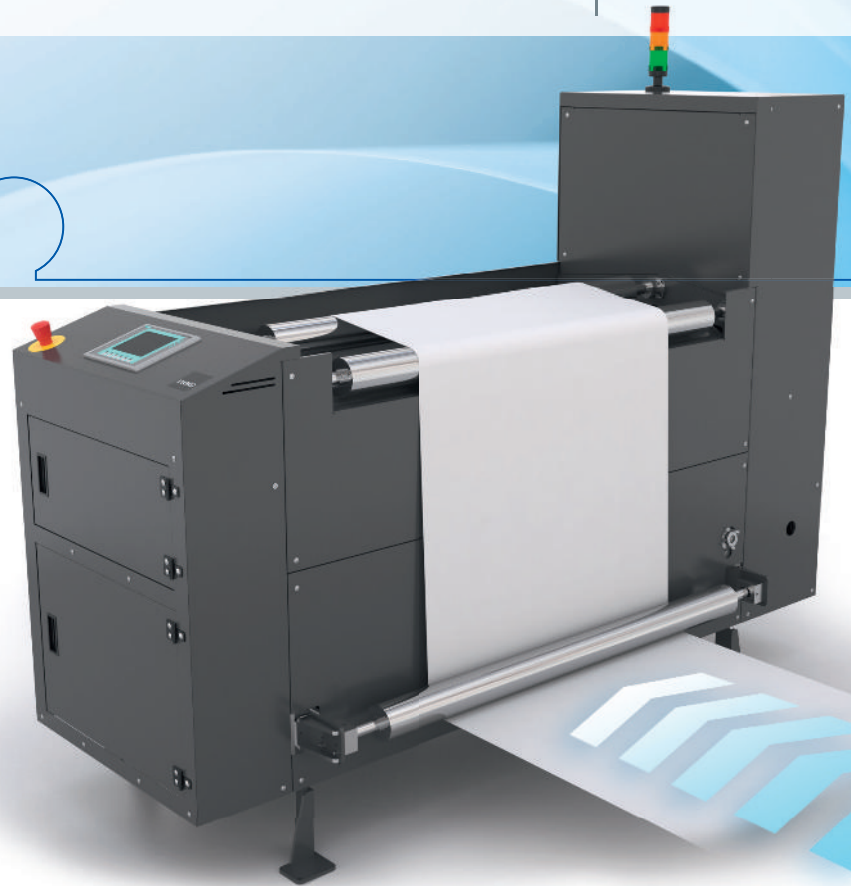
WebCon



WEKO-WEBCON OPTIMIZES THE PRODUCT QUALITY AND IMPROVES THE EFFICIENCY OF YOUR CONTINUOUS INKJET PRODUCTION.

A very consistent and precise fluid application by the WEKO-WebCon conditions the paper and compensates for paper variations and thereby ensures production in an optimal manner. Therefore, not only perfect running and stacking characteristics and an exact flatness of the paper is maintained, but it also remains dimensionally stable.

This results in smooth production runs, less waste, and a considerably better quality of product and further processing.



An accurate flatness without paper curl, waviness and static charge and without break during folding.



WEKO as SmartStream Partner with the Select Partner Gold status has developed the new WEKO-WebCon in close cooperation with HP. Based on the WEKO-RFDi conditioning unit proven for years, WEKO-WebCon follows the evolution of the HP T-Series. High speeds, high resolution and different printing carrier grammages demand

maximum flexibility in paper conditioning. Precisely defined application quantities of 0.5-5 ml/m² at a speed range of 200-1000 ft/min can be realised without changing the configuration. If necessary, the amounts of water for front and back side can be adjusted independently of each other.