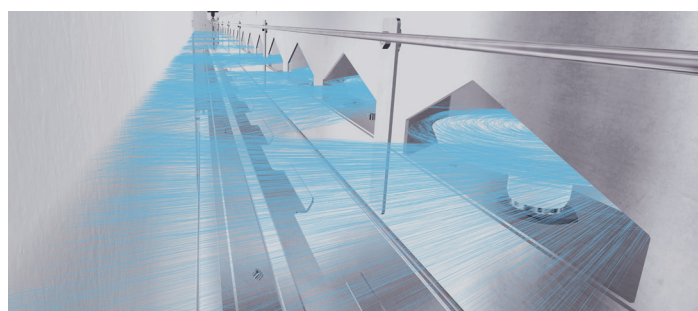


RAISE YOUR BENEFITS WITH MOISTURE CONTROL

- Energy savings due to steam reduction up to 30%
- Longer lifetime of the rubber belt up to 20%
- Higher production speed of 10%
- Increased productivity
- Better handfeel
- Stable compacting and shrink level.
- Reproducible settings
- Controlled and regulated moistening of the web for optimal humidity level

WEKO and **PLEVA** combine their leading technological expertise to boost your processes. Gain optimal results during fabric/ web shrinkage and conditioning like sanforizing and compacting.

The WEKO system works in perfect harmony with PLEVA's high precision moisture measurement and control, ensuring regulated fabric moistening at every stage.



This is how it works

The **WEKO** fluid supply unit provides the WEKO rotor carrier with the desired amount of moisture and controls the entire system. A pump delivers water from the storage tank to the rotor carrier. Through the rapid rotation of spray disks, the so-called rotors, a stream of microdroplets is formed which create a uniform fluid application. The application volume is thereby adapted to the machine speed and controlled by the moisture measurement.

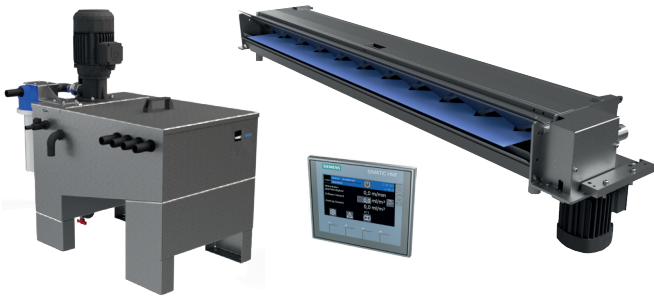
The quantity is entered in ml/m² and switched to % if moisture control is connected. **PLEVA RR 3.1** features three tandem roller sensors to measure the maximum moisture across the fabric width with high precision. The system is suitable for all fiber types, including synthetics, and is protected against electrostatic influences.

For surface-sensitive fabrics such as knits, the **PLEVA RR WIDE** is the preferred solution to prevent streaks by enabling moisture measurement across the entire fabric width. The maximum moisture is measured using two existing guide rollers, eliminating the need for an additional measuring frame. The system operates mark-free, is cost-effective, and is particularly suitable for knits and surface-sensitive fabrics with low synthetic content.

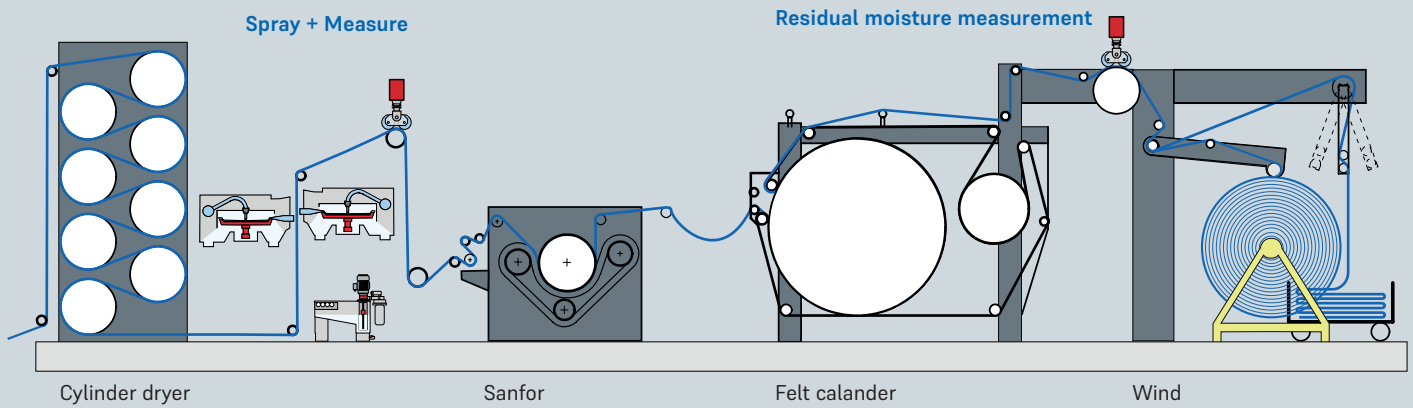


The Fluid Application System
WEKO-BASIC with **WEKO-SIGMA**

The Moisture Control **PLEVA RR 3.1**

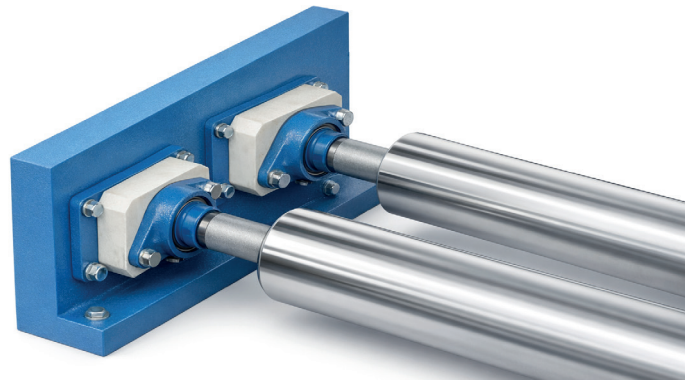
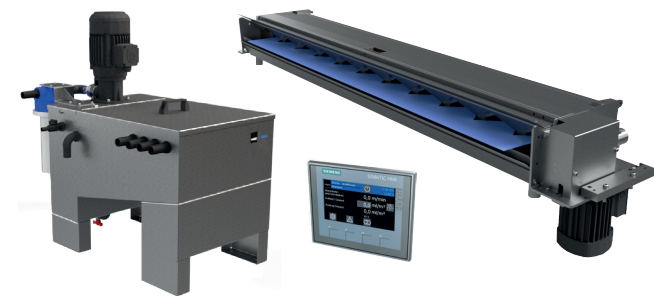


Sanfor Process



The Fluid Application System
WEKO-BASIC with **WEKO-SIGMA**

Or the Moisture Control **PLEVA "WIDE"**



Compactor Process

